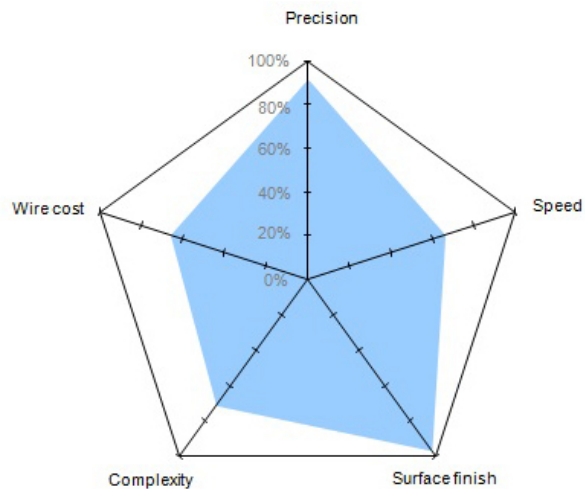
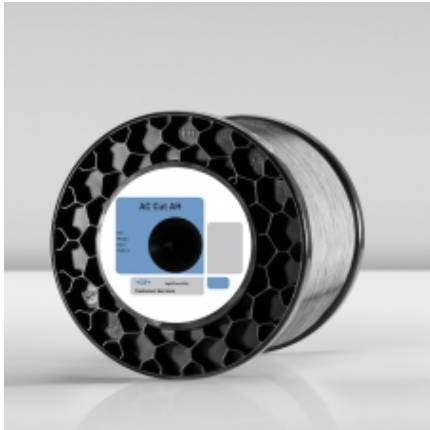




WIRE

AC CUT AH 900

High performance brass coated wire
with special zinc alloy - gamma diffused



- AC Cut AH the new generation of A wire that combines perfect surface quality and part cost reduction
- Perfect surface homogeneity and fin surface roughness Ra 0.05 μm
- Highest precision on geometrical details and part parallelism
- Associate to the performances of the latest series of generator it enables to obtain part cost reduction up to 20%
- Particularly recommended for top quality punches and dies in steel or carbide

Specifications

Coating	Conductivity	Elongation	Material	Resistance
Special zinc alloy gamma diffused	21% IACS	1.5 %	Brass CuZn37	900 N/mm ²

Packaging

Reference	Wire diameter (mm)	Spool weight(kg)	Spool Type	Spool / Package
950-100-001	0.10	1.8	K100	1
950-100-002	0.10	4	K125	1
950-100-003	0.10	5	P5	4
950-100-004	0.15	1.8	K100	1
950-100-005	0.15	4	K125	4
950-100-006	0.15	8	K160	2
950-100-009	0.20	4	K125	4

Achieve more...

AC CUT AH 900

High performance brass coated wire
with special zinc alloy - gamma diffused

Packaging

Reference	Wire diameter (mm)	Spool weight(kg)	Spool Type	Spool / Package
950-100-010	0.20	8	K160	2
950-100-011	0.20	16	K200	1
950-100-012	0.20	5	P5	4
950-100-013	0.20	10	P10	2
950-100-014	0.20	20	P15	1
950-100-015	0.25	4	K125	4
950-100-016	0.25	8	K160	2
950-100-017	0.25	16	K200	1
950-100-018	0.25	25	K250	1
950-100-019	0.25	5	P5	4
950-100-020	0.25	10	P10	2
950-100-021	0.25	20	P15	1
950-100-022	0.30	4	K125	4
950-100-023	0.30	8	K160	2
950-100-024	0.30	16	K200	1
950-100-025	0.30	25	K250	1
950-100-026	0.30	5	P5	4
950-100-027	0.30	10	P10	2
950-100-028	0.30	20	P15	1
950-100-040	0.10	2	K125	1