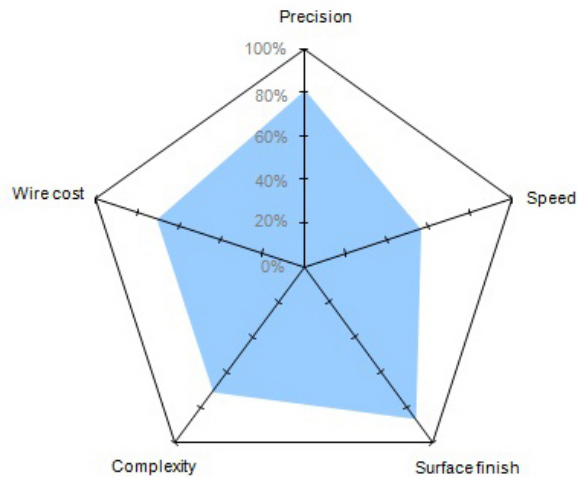
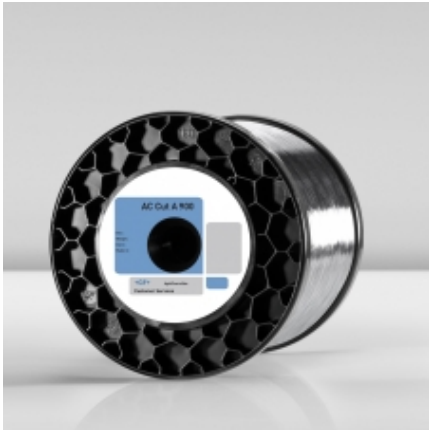




WIRE

AC CUT A 900

High performance zinc coated brass wire



- AC Cut A 900 is the Benchmark wire in the area of very high quality machining
- Perfect surface homogeneity and fin surface roughness $< Ra\ 0.1\ \mu m$
- Highest precision on geometrical details and part parallelism
- Recommended for a large range of application including moulds, cutting tools and general mechanic, requiring very high precision and excellent surface finish

Specifications

Coating	Conductivity	Elongation	Material	Resistance
Zinc	22 % IACS	1.5 %	Brass CuZn37	900 N/mm ²

Packaging

Reference	Wire diameter (mm)	Spool weight(kg)	Spool Type	Spool / Package
950-101-000	0.07	1.8	K100	1
950-101-001	0.10	1.8	K100	1
950-101-002	0.10	4	K125	1
950-101-003	0.10	5	P5	4
950-101-004	0.15	1.8	K100	1
950-101-005	0.15	4	K125	4
950-101-006	0.15	8	K160	2

AC CUT A 900

High performance zinc coated brass wire

Packaging

Reference	Wire diameter (mm)	Spool weight(kg)	Spool Type	Spool / Package
950-101-010	0.20	4	K125	4
950-101-011	0.20	8	K160	2
950-101-012	0.20	16	K200	1
950-101-013	0.20	25	K250	1
950-101-014	0.20	5	P5	4
950-101-015	0.20	10	P10	2
950-101-016	0.20	20	P15	1
950-101-018	0.25	4	K125	4
950-101-019	0.25	8	K160	2
950-101-020	0.25	16	K200	1
950-101-021	0.25	25	K250	1
950-101-023	0.25	5	P5	4
950-101-024	0.25	10	P10	2
950-101-025	0.25	20	P15	1
950-101-026	0.30	4	K125	4
950-101-027	0.30	8	K160	2
950-101-028	0.30	16	K200	1
950-101-029	0.30	25	K250	1
950-101-031	0.30	5	P5	4
950-101-032	0.30	10	P10	2
950-101-033	0.30	20	P15	1
950-101-040	0.10	2	K125	1