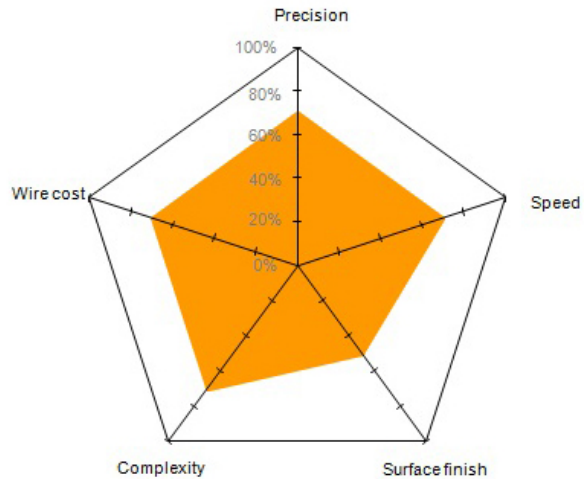
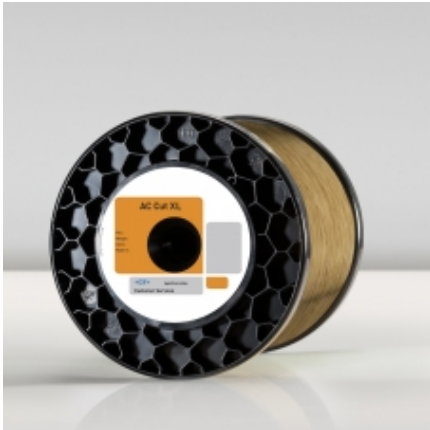




WIRE

AC CUT XL

Copper core coated wire with zinc diffused



- AC Cut XL is a high speed wire using an economical manufacturing process which makes it very competitive
- AC Cut XL is 15 % faster than standard Brass wire
- Perfectly compatible with AC Cut X technologies
- AC Cut XL reduces production cost in standard applications

Specifications

Coating	Conductivity	Elongation	Material	Resistance
Zinc diffused	80% IACS	1%	Copper	450 N/mm ²

Packaging

Reference	Wire diameter (mm)	Spool weight(kg)	Spool Type	Spool / Package
950-003-001	0.25	8	K160	2
950-003-002	0.25	16	K200	1
950-003-006	0.30	16	K200	1