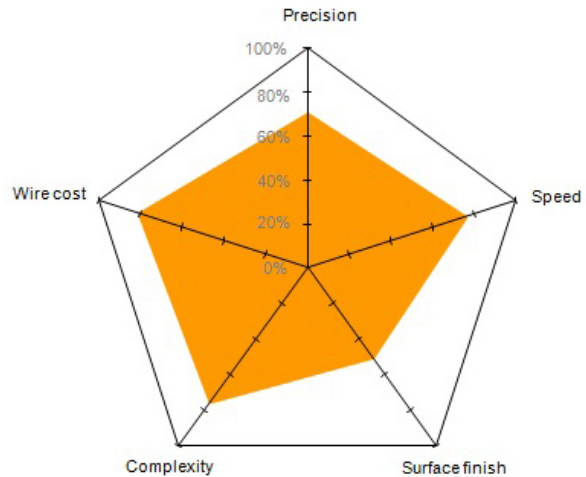
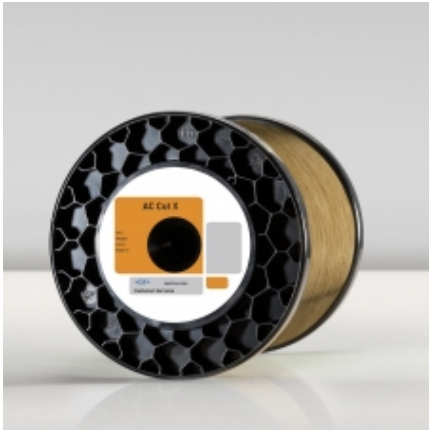




WIRE

AC CUT X

Copper core coated wire with zinc diffused



- AC Cut X is the benchmark wire in the field of high speed wires
- AC Cut X is 20 % faster than standard Brass wire
- Intended for GF AgieCharmilles machines (Type FI)
- AC Cut X reduces production cost in most varied and complex applications

Specifications

Coating	Conductivity	Elongation	Material	Resistance
Zinc diffused	80% IACS	1%	Copper	450 N/mm ²

Packaging

Reference	Wire diameter (mm)	Spool weight(kg)	Spool Type	Spool / Package
950-002-000	0.25	4	K125	4
950-002-001	0.25	8	K160	2
950-002-002	0.25	16	K200	1
950-002-003	0.25	25	K250	1
950-002-005	0.25	5	P5	4
950-002-006	0.25	10	P10	2
950-002-007	0.25	20	P15	1

Achieve more...

AC CUT X

Copper core coated wire with zinc diffused

Packaging

Reference	Wire diameter (mm)	Spool weight(kg)	Spool Type	Spool / Package
950-002-008	0.30	4	K125	4
950-002-009	0.30	8	K160	2
950-002-010	0.30	16	K200	1
950-002-011	0.30	25	K250	1
950-002-013	0.30	5	P5	4
950-002-014	0.30	10	P10	2
950-002-015	0.30	20	P15	1
950-002-016	0.25	25	P15	1